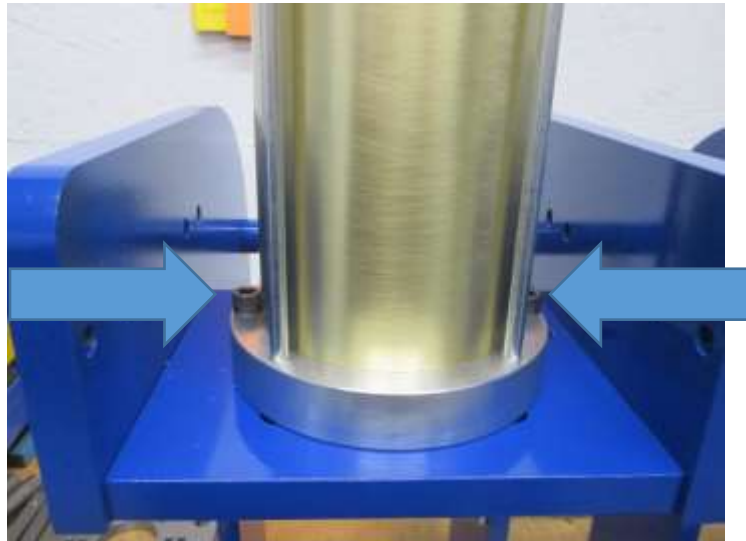
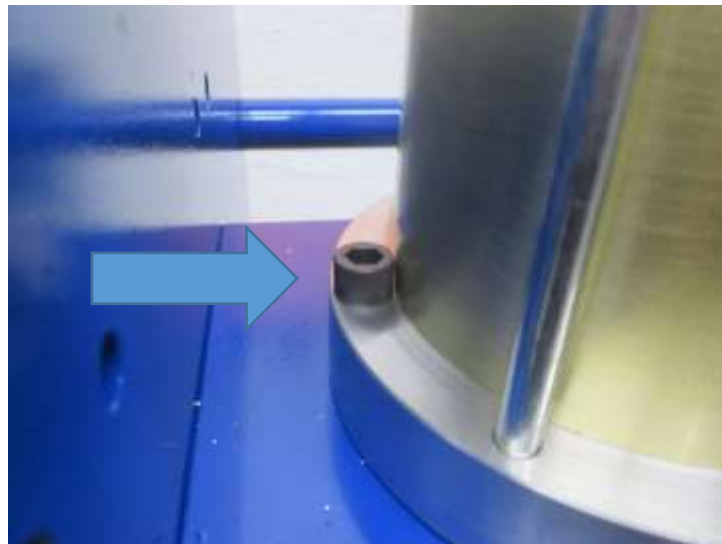


Direct Aire Cylinder Removal Manual

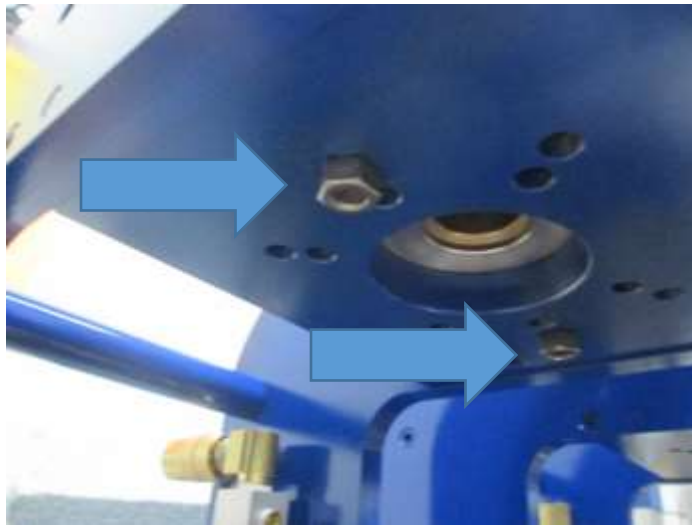
To remove the Direct Aire Model Cylinder from the frame simply remove the two black screws bolting the cylinder down to the frame. Please do not remove the long silver cylinder screws holding the cylinder together.



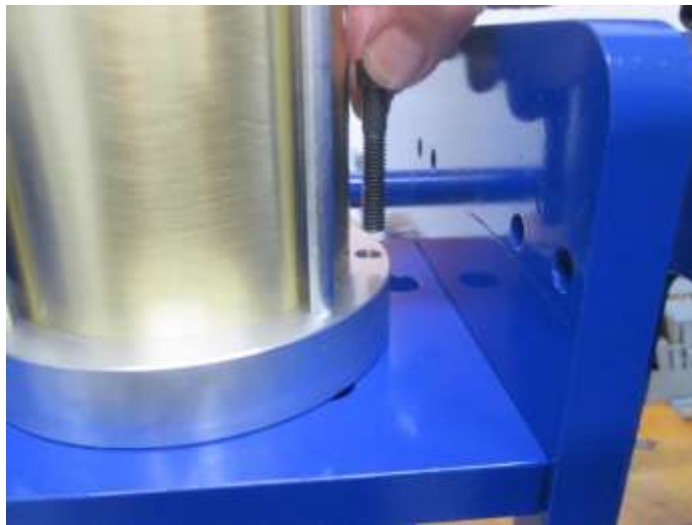
Below is a close up of one of the screws.



To remove the screw, loosen the hex nuts shown below. This will allow the screw to be removed.



After loosening the hex nuts, remove the screws as shown below.



The cylinder can now safely be removed from the frame. Please note that this is a Model 400, but the same applies to all Direct Aire Models.

